

## SPRAY CHARACTERISTICS

- Fine atomisation of many liquids that cannot be atomised by hydraulic pressure alone.
- Uniform solid cone. Spray angle varies with air pressure and flow. Separate metering device, such as orifice, metering pump or valve required.
- Large flow passages greatly reduce clogging.

## CONSTRUCTION AND MATERIALS

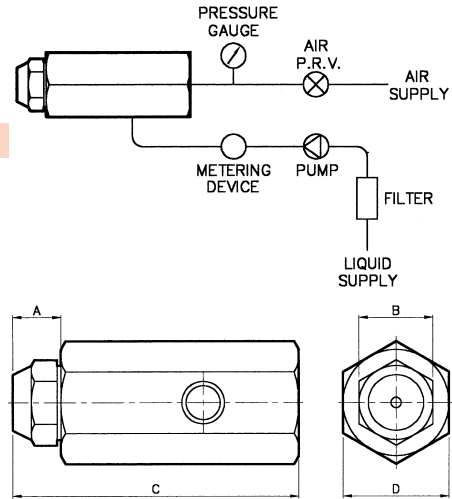
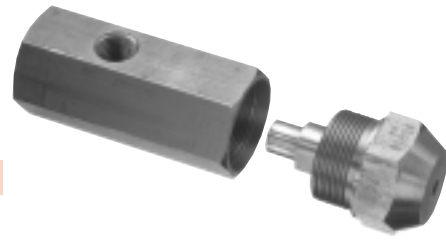
- Three part construction:
- Nozzle body - Brass or 303 Stainless Steel. Thread sizes: 3/4"-20 UNEF on No. 30615 and 1 1/8"-18 UNEF on No. 30616.
- Distributor - Brass or 303 Stainless Steel.
- Screw pin - Brass or 303 Stainless Steel.
- Adaptors are available (refer to chart).

## ORDER EXAMPLE

30615-15 Brass (nozzle).  
23034-1 Brass (Adaptor).

### DIMENSIONS (mm)

Nozzle Type	Material Type	Dimensions				Inlet Sizes	
		A	B Hex	C	D Hex	Air	Liquid
30615 with 23034-1 Adap.	Brass	15,5	22,2	76	32	1/4" NPT	1/8" NPT
30615 with 23034-2 Adap.	Stainless Steel	16,0	22,2	76	32	1/4" NPT	1/8" NPT
30616 with 30678-2 Adap.	Stainless Steel	20,0	31,8	93	32	1/2" NPT	1/4" NPT



Maximum Recommended Pressure: 7 Bar.G.  
Maximum Recommended Temperature: 82°C.

## CAPACITY CHART

NOZZLE NUMBER		FLOW RATE LITRES/HOUR	AIR FLOWRATE (M <sup>3</sup> /MIN) AND SPRAY ANGLE (°)									
			1,4 Bar.G.		2,1 Bar.G.		2,8 Bar.G.		3,4 Bar.G.		4,1 Bar.G.	
30615 - BRASS	30615 - SS		(M <sup>3</sup> /MIN)	(°)	(M <sup>3</sup> /MIN)	(°)	(M <sup>3</sup> /MIN)	(°)	(M <sup>3</sup> /MIN)	(°)	(M <sup>3</sup> /MIN)	(°)
-1	-2	18,9	0,048	45	0,068	35	0,088	30				
		37,8	0,020	75	0,025	65	0,059	60				
		56,7	0,010	80	0,020	75	0,023	70				
-15	-16	37,8	0,065	50	0,012	40	0,133	30				
		56,7	0,048	60	0,082	50	0,110	40				
		75,6	0,034	70	0,059	60	0,088	50				
		94,5	0,020	80	0,048	70	0,068	60				
		113,4	0,011	90	0,028	80	0,048	70				
-44	-45	113,4			0,076	65	0,110	55	0,139	45		
		132,3			0,062	65	0,093	55	0,119	45		
		151,2			0,051	70	0,079	60	0,105	50		
		170,1			0,040	70	0,065	60	0,088	50		
		189,0			0,028	75	0,054	65	0,076	55		
		207,9			0,022	75	0,042	65	0,065	55		
30616 -												
	-8	226,8			0,014	80	0,034	70	0,057	60		
		226,8			0,150	60	0,218	50	0,283	40		
		245,7			0,139	60	0,204	50	0,269	40		
		264,6			0,125	65	0,193	55	0,252	45		
		283,5			0,113	65	0,178	55	0,238	45		
		302,4			0,105	65	0,164	55	0,221	45		
	321,3			0,093	65	0,147	55	0,201	45			
	-14	340,2			0,085	70	0,130	60	0,173	50		
		340,2			0,150	55	0,221	45	0,292	35		
		359,1			0,139	60	0,204	50	0,269	40		
		378,0			0,130	60	0,187	50	0,252	40		
		396,9			0,119	65	0,173	55	0,235	45		
		415,8			0,108	65	0,161	55	0,221	45		
	-24	434,7			0,099	70	0,153	60	0,212	50		
		434,7					0,229	45	0,297	40	0,371	35
		453,6					0,218	50	0,292	45	0,365	40
		472,5					0,207	50	0,283	45	0,357	40
		491,4					0,198	55	0,272	50	0,346	45
		510,3					0,187	55	0,261	50	0,334	45
	529,2					0,176	60	0,241	55	0,306	50	
	-29	529,2					0,181	55	0,249	50	0,317	45
		548,1					0,173	60	0,241	55	0,309	50
		567,0					0,161	60	0,229	55	0,297	50
		585,9					0,147	65	0,215	60	0,280	55
		604,8					0,133	65	0,195	60	0,255	55

AIR ATOMISING

TYPE AIRO®

Contact our Helpline for any special requirements:  
Tel: +44 (0) 151 424 6821  
Fax: +44 (0) 151 495 1043  
e-mail: sales@delavan.co.uk  
Web: www.delavan.co.uk

