



## SPRAY CHARACTERISTICS

- Uniform distribution of droplets in a hollow cone spray pattern.
- For nozzles of the same capacity, the droplet size of hollow cone type nozzles are smaller than droplets produced by solid cone nozzles.

## CONSTRUCTION AND MATERIALS

- One-piece body with removable spiral-type core.
- Hexagon body for easy installation, eliminates distortion of orifice during installation.
- Available with Male BSPT or Female BSPP threads.
- Brass and 316 Stainless Steel are standard.
- Other materials available to special order.

## ORDER EXAMPLE

*3/8" BJM 6 (Male) Brass.*

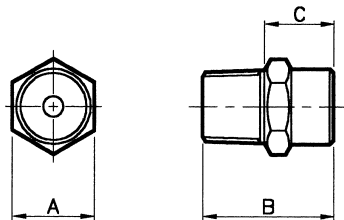
*1" BJF 60 (Female) Stainless Steel.*

## DIMENSIONS AND WEIGHTS

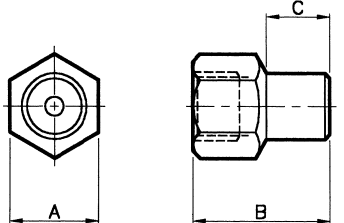
Thread Size	Nozzle Type	Dimensions (mm)			Weight (g)
		A Hex	B	C	
1/8	BJM	11,3	17,5	9,6	10
1/8	BJF	15,3	25,4	13,5	21
1/4	BJM	15,3	24,5	13,0	24
1/4	BJF	18,0	27,8	12,7	35
3/8	BJM	18,0	25,5	14,0	35
3/8	BJF	20,8	38,9	21,1	58
1/2	BJM	25,6	32,0	16,1	75
1/2	BJF	25,6	50,0	28,3	118
3/4	BJM	28,0	36,0	19,0	115
3/4	BJF	31,8	62,7	31,5	215
1	BJM	38,0	50,0	28,5	290
1	BJF	38,0	81,0	51,0	330

TYPE BJ

HOLLOW CONE SPRAY



BJM (MALE)



BJF (FEMALE)

## CAPACITY CHART

Maximum Recommended Pressure: 35 Bar.G.

NOZZLE NUMBER	APPROX. ORIFICE DIA. (mm)	BSPT THREAD SIZE						FLOW RATE IN LITRES/MIN AT Bar.G.										SPRAY ANGLE (°) AT Bar.G.		
		1/8	1/4	3/8	1/2	3/4	1	,7	1	1,5	2	3	4	5	6	7	8	,7	2	5
		BJ 1	1,6							,45	,53	,65	,76	,94	1,09	1,22	1,33	1,46	1,57	44
BJ 2	2,0							,62	,74	,87	1,00	1,20	1,37	1,53	1,67	1,80	1,93	60	70	75
BJ 3	2,4							,69	,84	,98	1,12	1,36	1,57	1,73	1,88	2,03	2,16	66	80	85
BJ 3	2,8							,74	,86	1,04	1,19	1,44	1,66	1,84	1,99	2,16	2,29	62	65	70
BJ 4	2,4							,90	1,07	1,29	1,47	1,79	2,04	2,27	2,46	2,67	2,85	62	66	80
BJ 5	2,8							1,02	1,21	1,47	1,70	2,09	2,40	2,70	2,93	3,21	3,39	74	83	83
BJ 6	3,2							1,21	1,45	1,77	2,04	2,51	2,89	3,23	3,52	3,83	4,09	75	84	86
BJ 7	3,6							1,36	1,62	1,99	2,30	2,84	3,31	3,68	4,02	4,36	4,69	75	90	95
BJ 7	3,2							1,70	2,00	2,44	2,82	3,42	3,95	4,40	4,83	5,24	5,57	64	68	76
BJ 8	3,6							1,84	2,17	2,66	3,06	3,73	4,47	4,78	5,24	5,70	6,06	72	85	84
BJ 9	4,0							2,16	2,55	3,08	3,54	4,29	4,92	5,46	5,98	6,48	6,89	84	90	88
BJ 11	4,7							2,39	2,87	3,52	4,14	5,10	5,93	6,62	7,26	7,95	8,50	86	90	90
BJ 13	5,5							2,85	3,41	4,21	4,92	6,06	7,26	7,91	8,69	9,51	10,10	87	97	98
BJ 18	4,7							3,88	4,60	5,61	6,43	7,91	9,10	10,20	11,21	12,12	13,03	67	73	74
BJ 20	5,5							4,69	5,57	6,80	7,86	9,65	11,21	12,52	13,64	14,85	15,86	74	75	80
BJ 26	6,4							5,46	6,58	8,13	9,46	11,72	13,64	15,35	16,97	18,58	19,90	80	84	80
BJ 29	7,1							6,34	7,63	9,42	10,91	13,43	15,76	17,68	19,39	21,11	22,62	88	88	87
BJ 33	7,9							6,99	8,36	10,50	12,22	15,15	17,88	20,10	22,22	24,24	26,06	95	95	92
BJ 28	4,7							-	7,08	8,83	10,20	12,63	14,85	16,67	18,38	20,10	21,61	-	50	45
BJ 39	5,9							-	10,06	12,52	14,65	18,08	21,11	23,94	26,26	28,68	30,81	-	60	55
BJ 53	7,1							10,61	12,83	15,86	18,58	22,83	26,66	30,10	33,07	36,26	38,58	65	60	62
BJ 60	7,9							12,63	15,15	18,69	21,61	26,56	31,01	34,74	38,18	41,31	44,14	70	65	67
BJ 66	8,7							14,34	17,17	21,01	24,24	29,59	34,14	38,18	41,81	45,45	48,28	70	65	65
BJ 75	9,5							15,96	18,99	23,43	27,07	33,13	38,58	43,23	47,37	51,51	52,82	73	70	70
BJ 102	12,3							23,03	27,27	33,33	38,48	46,86	53,73	59,79	65,25	70,80	75,35	80	83	83

Contact our Helpline for any special requirements:  
Tel: +44 (0) 151 424 6821  
Fax: +44 (0) 151 495 1043  
e-mail: sales@delavan.co.uk  
Web: www.delavan.co.uk

